

job name:   
 type:

## 12" miniskrt™ ceiling spec sheet 90CRI

### material

#### housing

precision CNC spun .064" aluminum outer housing available in 15 standard powder coat paint finishes listed below. .060" aluminum liner powder coat painted high reflectance matte white.

#### diffuser

choose from .125" white acrylic or .064" spun aluminum powder coat painted high reflectance matte white.

### LED

custom LED board in 3000K, 3500K, or 4000K (90+ cri standard). LEDs are rated >50,000 hours L70 (10K) at 85°C per LM-80 test data, and 70,000 hours projected life per IES TM-21.

### driver

in canopy, constant current, class P class 2 power unit, class A sound rating, universal input (120-277V) programmable driver, 1% minimum dimming level, PF >0.90. protections include short circuit, input/output isolation and surge protection (3KV). wired for 0-10v dimming from factory.

### finish

select from standard powder coat paint finishes or specify RAL# for custom colors.

### emergency

if required, recommend use of inverter (by other).



## catalog number

### size

**C6112**  
12.5"dia X 8"ht

### diffuser

**A** acrylic

**M** metal

### CCT

**30** 3000K  
**35** 3500K  
**40** 4000K

**30** 3000K  
**35** 3500K  
**40** 4000K

### lumens

**LO** 1120 lm  
**HI** 2615 lm

**LO** 910 lm  
**HI** 2125 lm

### painting finish

**AP** anodized paint  
**BS** brass  
**BU** blue  
**BZ** bronze  
**CP** champagne  
**FB** flat black  
**GM** gun metal  
**MB** military blue  
**MW** matte white  
**OR** orange  
**RD** red  
**SB** satin black  
**SS** satin silver  
**TG** textured gray  
**YO** yellow

### premium finish

**RAL** specify RAL#



job name:   
 type:

# 16" miniskrt™ ceiling spec sheet 90CRI

**material**

**housing**

precision CNC spun .064" aluminum outer housing available in 15 standard powder coat paint finishes listed below. .060" aluminum liner powder coat painted high reflectance matte white.

**diffuser**

choose from .125" white acrylic or .064" spun aluminum powder coat painted high reflectance matte white.

**LED**

custom LED board in 3000K, 3500K, or 4000K (90+ cri standard). LEDs are rated >50,000 hours L70 (10K) at 85°C per LM-80 test data, and 70,000 hours projected life per IES TM-21.

**driver**

in canopy, constant current, class P class 2 power unit, class A sound rating, universal input (120-277V) programmable driver, 1% minimum dimming level, PF >0.90. protections include short circuit, input/output isolation and surge protection (3KV). wired for 0-10v dimming from factory.

**finish**

select from standard powder coat paint finishes or specify RAL# for custom colors.

**emergency**

if required, recommend use of inverter (by other).



## catalog number

--	--	--	--	--

**size**

**C6116**  
16.25" dia X 9.5"ht

**diffuser**

**A** acrylic

**M** metal

**CCT**

**30** 3000K  
**35** 3500K  
**40** 4000K

**30** 3000K  
**35** 3500K  
**40** 4000K

**lumens**

**LO** 2660 lm  
**HI** 3920 lm

**LO** 2160 lm  
**HI** 3185 lm

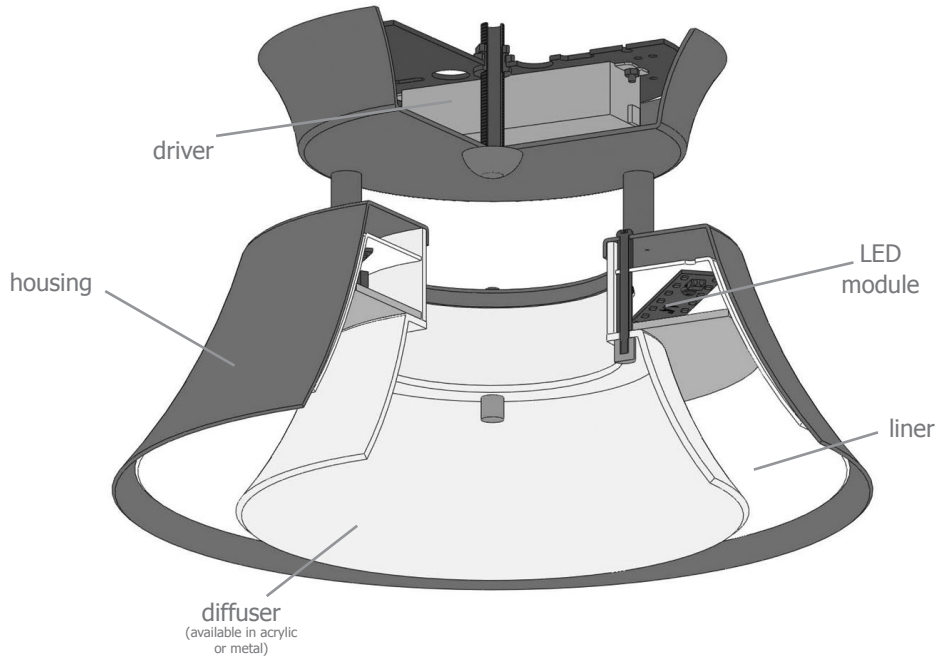
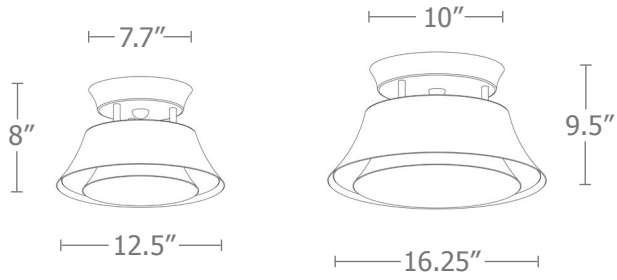
**painted finish**

- AP** anodized paint
- BS** brass
- BU** blue
- BZ** bronze
- CP** champagne
- FB** flat black
- GM** gun metal
- MB** military blue
- MW** matte white
- OR** orange
- RD** red
- SB** satin black
- SS** satin silver
- TG** textured gray
- YO** yellow

**premium finish**

**RAL** specify RAL#

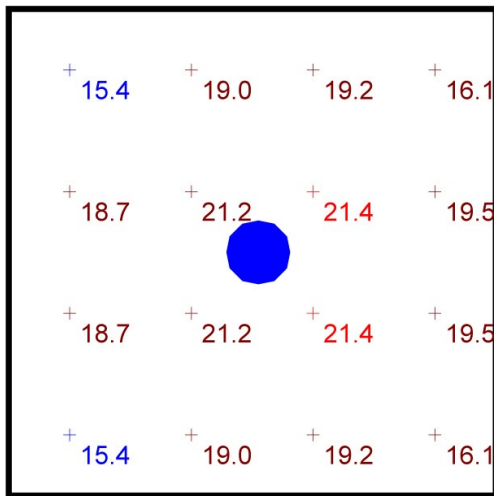




## Typical Lighting Layout

Schedule					
Quantity	Manufacturer	Catalog Number	Description	Lamp	Wattage
1	Impact Architectural Lighting	C6112 M 40HI	12" dia. ceiling mount miniskrt w/metal diffuser	4000k 90cri LED	25

Statistics						
Description	Symbol	Avg	Max	Min	Max/Min	Avg/Min
miniskrt - metal	+	18.8 fc	21.4 fc	15.4 fc	1.4:1	1.2:1



Plan View  
Scale - 1" = 2ft

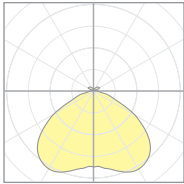
- 8' x 8' x 8'H space
- 80/50/20 reflectances
- bottom of fixture at 8' aff
- FC readings at 2.5' aff
- layout conducted using C6112 HI lumen 90 CRI package (2125 delivered lumens)



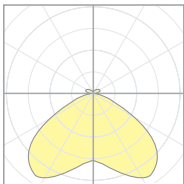
## Calculation Table

The application of a Light Loss Factor is required to:

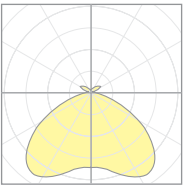
- match the lumen output for the power module specified
- incorporate the increased lumen output due to LED/Driver upgrades



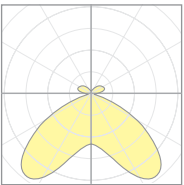
**20913**  
P6112-A-40LO



**20914**  
P6112-M-40LO



**20919**  
P6116-A-40HI



**20920**  
P6116-M-40HI

Cat No	Delivered* Lumens	Watts 120V / 277V	IES File #	LLF to be applied
<b>C6112-A LO</b>	1120	12	<b>20913</b>	.90
<b>C6112-A HI</b>	2615	28	<b>20915</b>	.99
<b>C6112-M LO</b>	910	11	<b>20914</b>	.91
<b>C6112-M HI</b>	2125	26	<b>20916</b>	.99
<b>C6116-A LO</b>	2660	26	<b>20917</b>	.95
<b>C6116-A HI</b>	3920	39	<b>20919</b>	.99
<b>C6116-M LO</b>	2160	26	<b>20918</b>	1.02
<b>C6116-M HI</b>	3185	39	<b>20920</b>	1.06

\*delivered lumens based on 4000K, 90+ cri

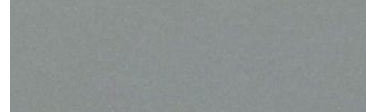
## Powder Coat Paint Finishes



**MW** matte white



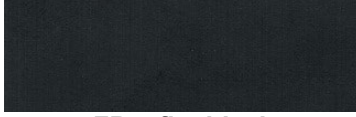
**AP** anodized paint



**SS** satin silver



**TG** textured gray



**FB** flat black



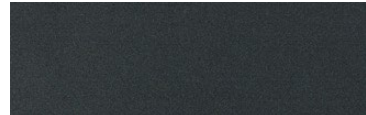
**SB** satin black



**CP** champagne



**BZ** bronze



**GM** gun metal



**OR** orange 2011



**BU** blue 5017



**BS** brass



**RD** red 3020



**YO** yellow 1018



**MB** military blue

For accurate color verification, actual finish samples are available upon request.

## Premium Finishes\*



**RAL#**

\*Available on select series. Consult product submittal for availability.